



Image Uploader App

- ✚ It requires Adobe AIR to run, download the Adobe Air application at <http://get.adobe.com/air/> (Mac and PC) and install
- ✚ The FEMA ImageUploader is IEUploader082.zip (v0.82)
http://www.capmembers.com/emergency_services/operations_support/education_and_training/operations-training-webinars/
- ✚ After installing the App, go to the “Settings” tab and change the URL to <https://apps.femadata.com/ImageEventsService/API.svc>
- ✚ Your token is: <assigned to your wing by the NOC>
 - Make sure there are no spaces at the end of the token or URL when you add them.
- ✚ After adding the URL and Token, click “Save Settings” and close the App.
- ✚ After saving the URL it will be prefaced with ?apikey=
- ✚ If saved a second time the preface will be added again which may cause an issue.
- ✚ Close and Re-open the application and you should see events listed in the “Event” drop down list.



Image Uploader App

- ✦ The image uploader uses different terminology than WMIRS
- ✦ Here is the decoder ring
- ✦

<u>Uploader</u>	<u>WMIRS</u>
Event	Name of mission
Team	Mission number
Mission	Sortie number
- ✦ For training use the CAP Training Event in the uploader and create Teams under Event and Missions under Team
- ✦ The type of image is specific for a Mission (Sortie) so insure you are uploading the correct type or image
- ✦ NADIR is straight down, Oblique is usually about 45 degrees from vertical, Ground is taken on the ground



Image Uploader App

Image Uploader

Upload Settings

Step 1 - Enter mission details...

1 Event: CAP Training
Team: 15-T-10373 +New Team
Mission: A0024 +New Mission

Step 2 - Choose the NMEA file to upload...

2 Browse... Location Count:
Process Time:
LOADING 0%

Step 3 - Upload files...

3 Browse... Total Images: 0
Uploading: 0
Complete: 0

Start Uploading Clear Remove Complete Retry Errors

LOADING 0% Auto Refresh Map Show Thumbnail
Concurrent Uploads: 2

For training missions use the CAP Training Event

Step 2 is optional and can be used if uploading images that are NOT geotagged

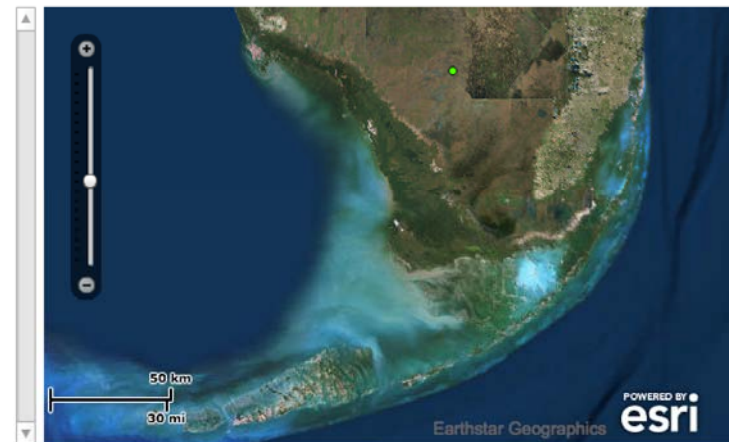





Image Uploader App

Upload

Step 1 - Enter mission details...

 Event:

Team:

Mission:

Uploading images Step 1

For training missions, Event = CAP Training unless otherwise instructed OR

For actual missions, Event is supplied by the NOC

Team = WMIRS mission number


Mission = WMIRS sortie number

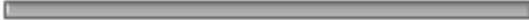
NOTE: Image type, NADIR, Oblique or Ground is set when a new Mission (Sortie) is created.



Image Uploader App

Step 2 - Choose the NMEA file to upload...

 Location Count:
Process Time:



LOADING 0%

Step 2 is optional but can be used to upload a NMEA formatted track log
The uploader can use the track log to geo tag images that are not already
geo tagged


Tools like GPS Babel can be used to convert track log file types to NMEA
format

Garmin devices typically produce gpx file format
NMEA files typically end with a file extension of .log or .txt



Image Uploader App

Step 3 - Upload files...

 Total Images: 0
Uploading: 0
Complete: 0

Auto Refresh Map Show Thumbnail

LOADING 0% Concurrent Uploads: 2

Ensure that your images are of the correct type (NADIR, Oblique, Ground) for the “mission” (third item) selection made in step 1

Browse to the folder that has the jpg images to be uploaded but the folder will NOT show a list of files

Only jpg files will be uploaded. DELETE all extraneous images before starting the upload process. **Only** images of the target area are to be uploaded.



Image Uploader App

Image Uploader

Upload Settings

Step 1 - Enter mission details...

1 Event: CAP Training
Team: 15-T-10373 +New Team
Mission: A0024 +New Mission

Step 2 - Choose the NMEA file to upload...

2 Browse... Location Count:
Process Time:
LOADING 0%

Step 3 - Upload files...

3 Browse... Total Images: 0
Uploading: 0
Complete: 0

Start Uploading Clear Remove Complete Retry Errors

LOADING 0% Auto Refresh Map Show Thumbnail
Concurrent Uploads: 2

The Total Images will show the total number to be uploaded and the Uploading is a status and Complete is the number already uploaded

Time to upload will depend on the bandwidth of the internet connection





Online Access to Images

🔗 Quick look Public Viewing Website for IMAGES

- Public Site:

<http://apps.femadata.com/ImageEventsPublic>

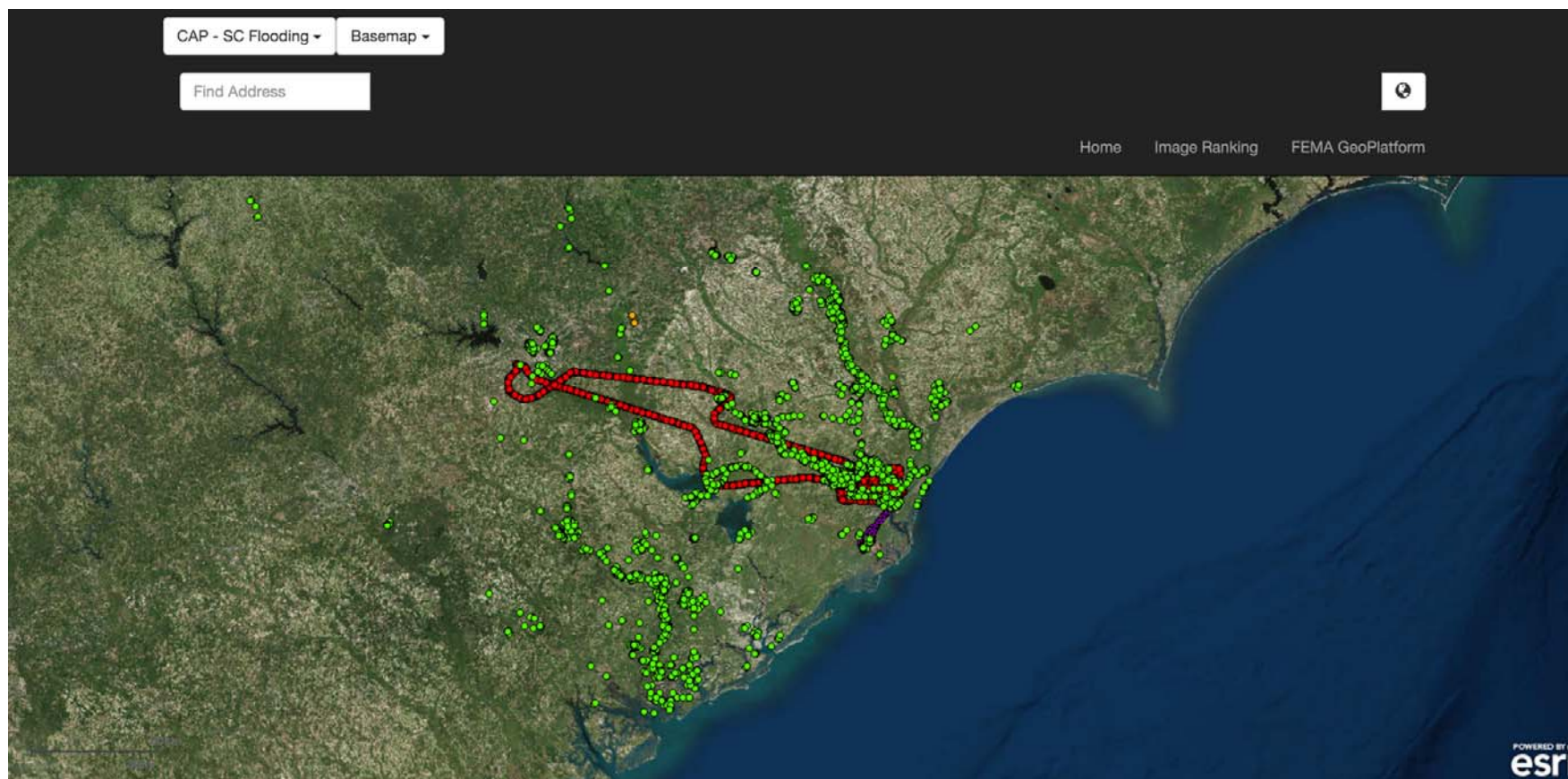
- This site reports the number of images for each event, team and mission.

🔗 FEMA GeoPlatform used to view the map and control layers, use this URL

<http://fema.maps.arcgis.com/home/webmap/viewer.html?webmap=990b93d2522441a48bf2aaf536518419>



Online Access to Images



Color of image dots depends on the type, NADIR, Oblique, Ground and red is a track



Online Access to Images

HOME ▾ Civil Air Patrol Photos Modify Map Sign In

Contents

- 2012 USA Population Density (Mature Support)
- ImageEvents
 - Aerial Oblique
 - Aerial Oblique Photo Points
 - Aerial Oblique Target Points
 - Aerial Oblique Heading Line
 - Aerial Nadir
- Ground
 - Ground Photo Points
 - Ground Target Points
 - Ground Heading Line
- NMEA Points

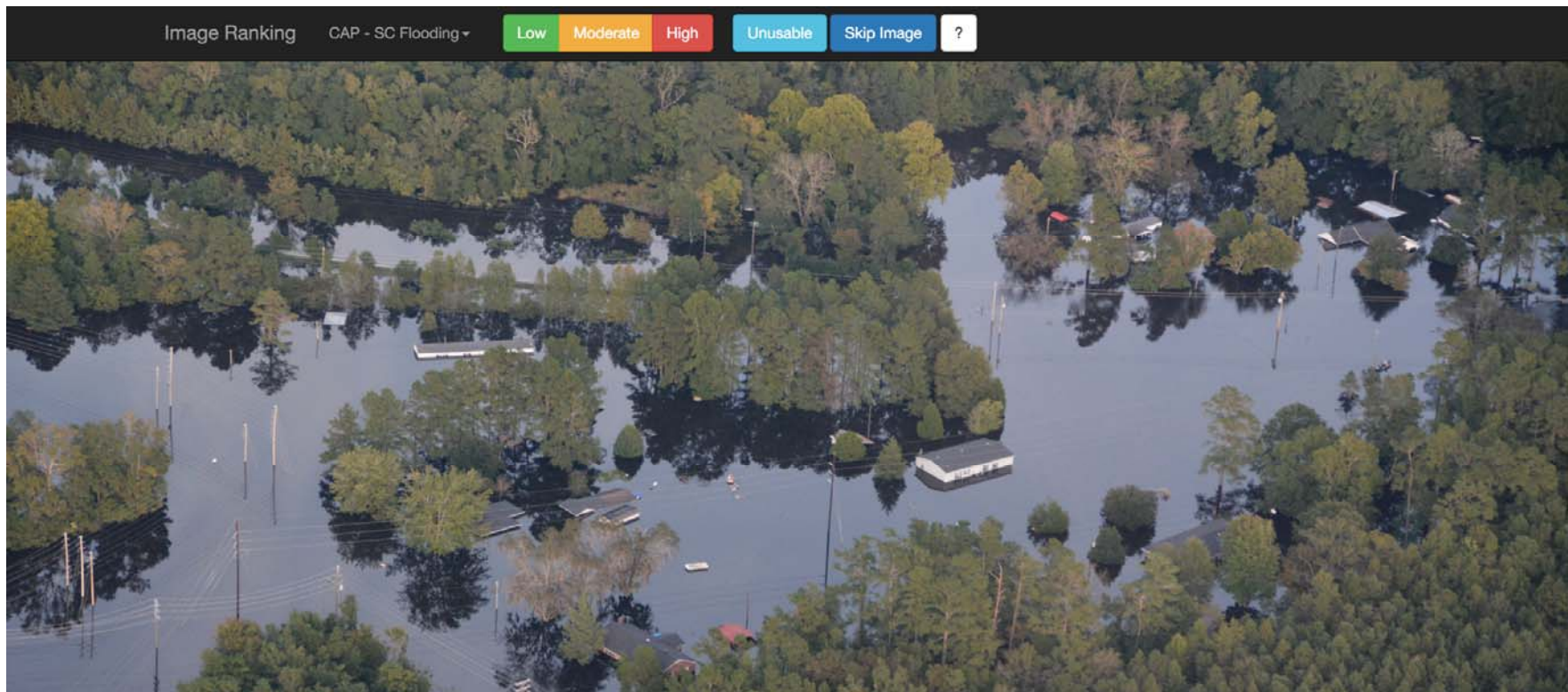
Esri.com | Help | Terms of Use | Privacy | Contact Esri | Contact Us | Report Abuse

POWERED BY
Earthstar Geographics | Esri, HERE, DeLorme, NGA, USGS

Basemap will give options for the underlying map



Online Access to Images



FEMA uses crowd sourcing to provide image rankings within broad categories for severity of damage